

Upgrade procedure of the Control Panel 5340

Mastercycler ep Version 3.029 and Panel Version 4.605



The Control Panel 5340 has no USB ports.

MMC means Multi Media Card.

Don't replace the internal MMC in the Panel.

An upgrade could be done with internal MMC 16, 64 or 128 MB only.

If the size of the internal MMC is 32 MB, the PCB Panel has to be replaced.

Upgrade procedure

Auxiliary aids:

- PC or Laptop
- Windows XP or Win 7 32/64 bit
- Card reader
- Repair kit consisting of:
 - Zero modem cable (for PC or laptop with RS-232 port)
 - Belkin USB Serial Adapter (for PC or laptop without RS 232 port)
 - 2 MMC's (1 blank **Backup MMC**, 1 **Software MMC** with versions 3.029/V4.605 & Flashit.zip)
- Jumper

1. Check MMC-Karte

- ▶ Switch on Mastercycler ep.
- ▶ Call up "Properties" and find out the size of the internal MMC first.

2. Creating a backup of your user files

- ▶ Insert the empty **Backup-MMC** and select the MMC node in the navigation tree.



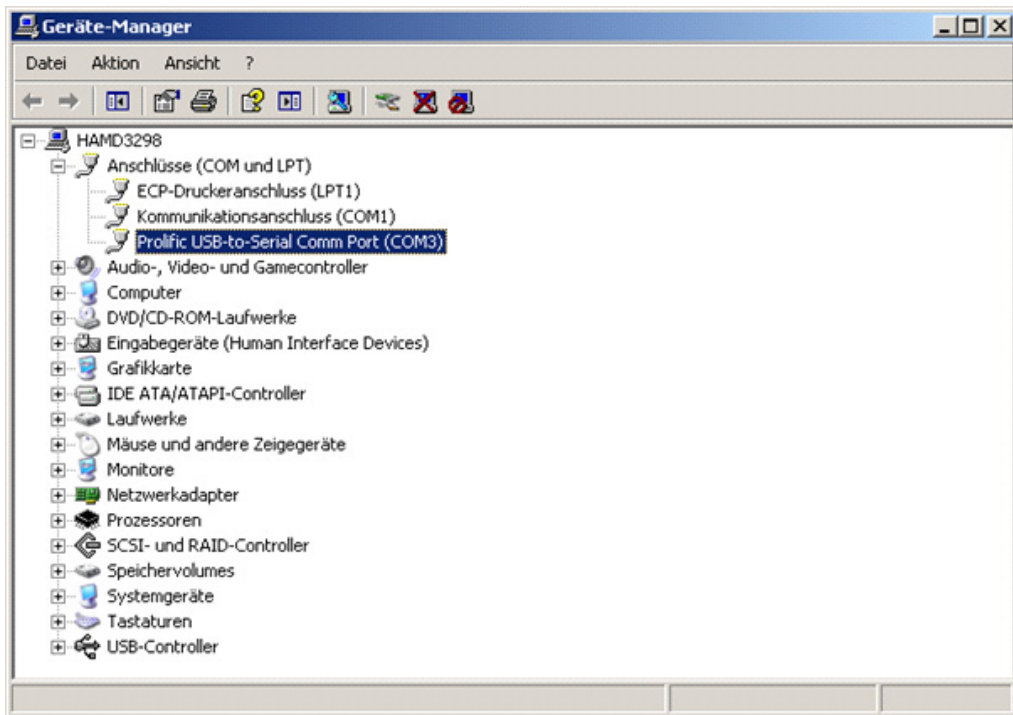
- ▶ Press the Backup softkey and follow the instructions displayed. User accounts, folders, and programs are copied to the **Backup-MMC**. This process may take a few minutes.
- ▶ After successful completion of the backup, remove the **Backup-MMC**.
- ▶ Shut down your Control Panel and switch off the Mastercycler ep.

Upgrade procedure of the Control Panel 5340

3. Installing the driver

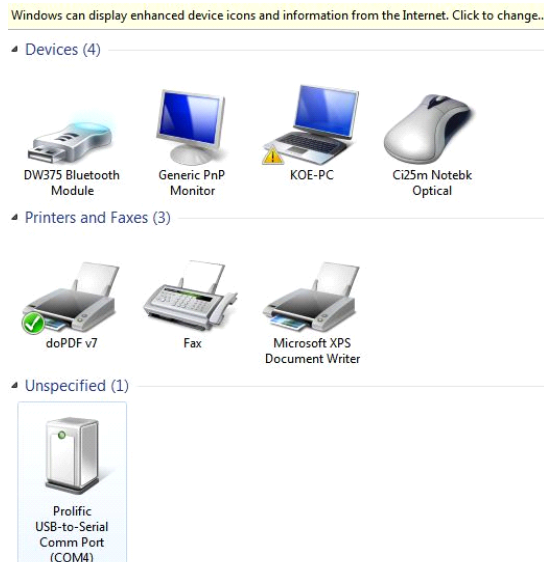
3.1 Installing the driver under Windows XP

- ▶ Install the driver using "PL2303_Prolific_DriverInstaller_v1.5.0.exe".
- ▶ Connect the USB serial converter to the USB port.
Additional information is available in the driver manual.
After Windows XP has detected the device, it will be shown in the device manager and can be selected in Flashit.



3.2 Installing the driver under Windows 7

- ▶ Install the driver using "PL2303_Prolific_DriverInstaller_v1.5.0.exe".
- ▶ Connect the USB serial converter to the USB port.
Additional information is available in the driver manual.
After Windows 7 has detected the device, it will be shown in the device manager and can be selected in Flashit.



Upgrade procedure of the Control Panel 5340

4. Preparing the PC or laptop with USB interface

4.1 Selecting the USB port and COM port

Flashit only communicates with COM1 to COM4 ports. COM ports with higher numbers are not supported.

The USB serial converter must be connected to a USB connector which has been assigned by Windows for COM1 to COM4 ports.

- ▶ Check to see if one of the COM1 to COM4 ports is available.
- ▶ If the first 4 COM ports are occupied, assign a different COM port to the device.

4.2 Checking the COM port assignment

To display the assignment of the COM ports, select the listed Windows elements in succession.

Windows XP:

Control Panel -> System -> Hardware -> Device Manager -> Connections (COM and LPT).

Windows 7:

Control Panel -> System and Security -> System -> Device Manager -> Ports (COM & LPT).

4.3 Clearing COM ports (IT help desk)

Note: The user must have administrator rights to assign a different COM port to a device.

Select the "Connections" node in the Device Manager as described above.

Using the right mouse button, click on the device that COM1, COM2, COM3 or COM4 is assigned to.

Select "Properties".

Select the "Connection settings" tab.

Click on the "Expanded..." button.

Select an available COM port in the "COM connection number:" drop-down menu.

Use the "OK" button to close all the windows.

The COM port that was initially clicked on, using the right mouse button, is now available.

4.4 Moving previously defined COM ports

If COM port 5 or higher has already been assigned to the USB serial converter, it can be moved to ports COM1 to COM 4. Follow the instructions in item 3.3 and select one of the COM1 to COM4 ports in the "COM connection number:" drop-down menu.

4.5 Baud rate settings

Use the Flashit program to set the baud rate. The following values are available:

- 9600
- 19200
- 38400
- 56000
- 115200

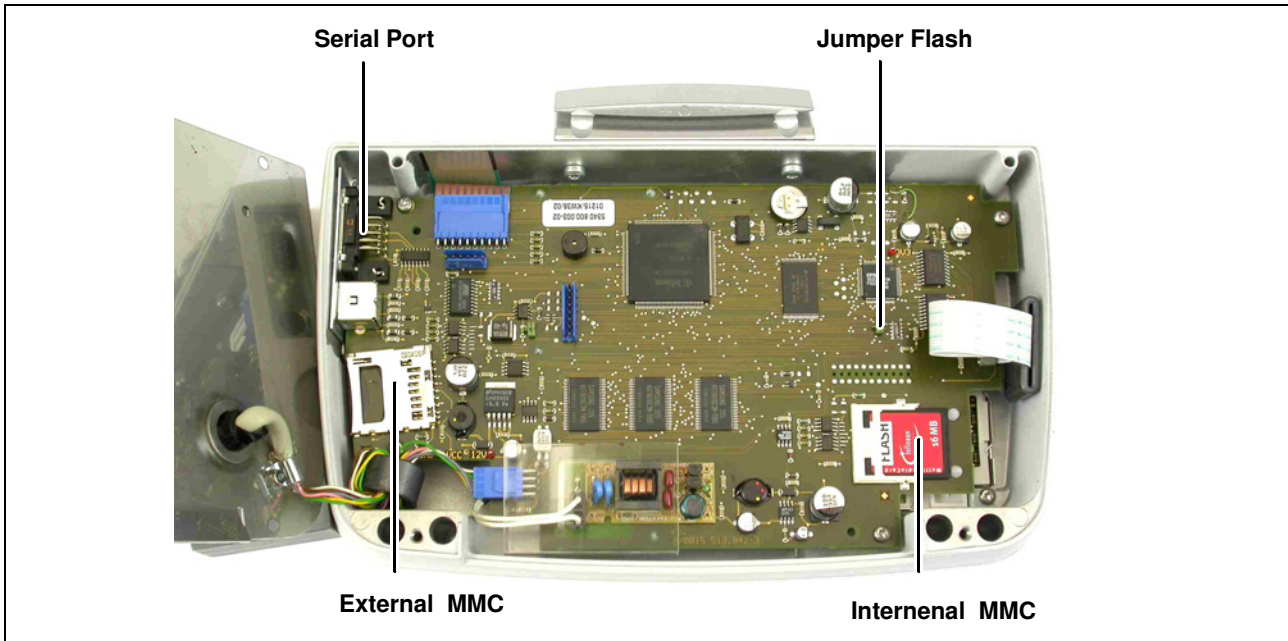
For Windows XP, the best results have been achieved using 56000 baud and 38600 baud for Windows 7.

The baud rate depends on the connected devices and must be determined on a case-by-case basis.

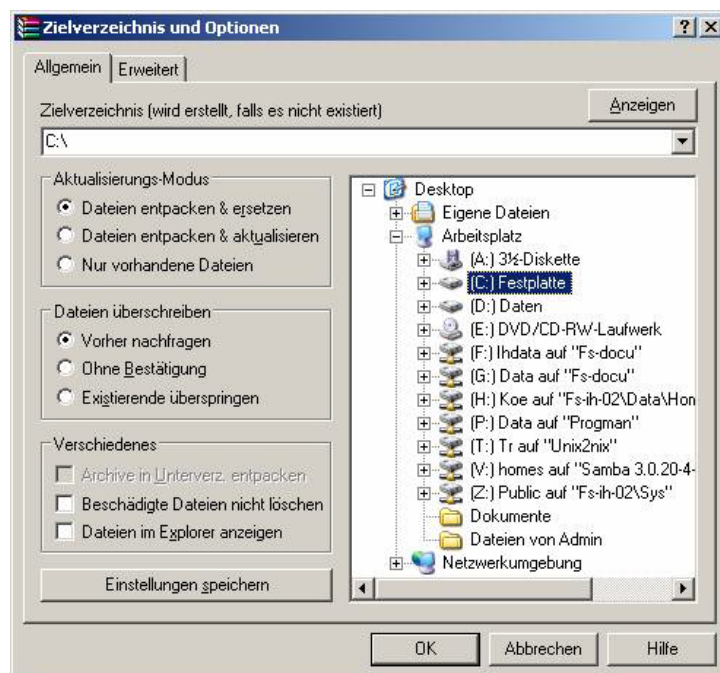
5. Hardware reparation

- ▶ Take the base plate of the panel.
- ▶ PC with RS-232 port: Use the null modem cable to connect the RS-232 port to COM1 on the PC.
- ▶ PC with USB interface: Use the USB/RS-232 adapter to connect the RS-232 port to a USB interface on the PC.
- ▶ Plug in Jumper "Flash".
- ▶ Connect the Panel to the Mastercycler.
- ▶ Switch on Cyclor.

Upgrade procedure of the Control Panel 5340



6. Installing software and starting the flash procedure



- ▶ Unzip file "flashit.zip" to harddisk
The Flashit folder will be copied to C:/FlashIt, where FlashIt.exe will then be executed.

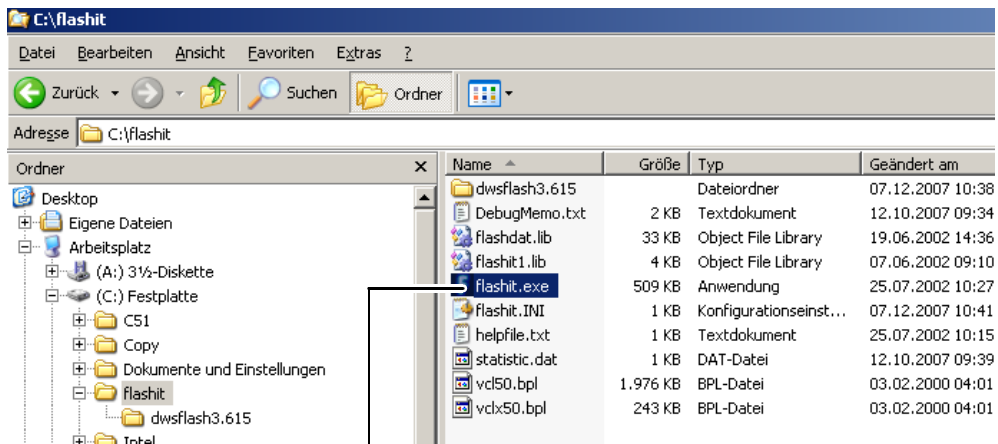
- ▶ Start "Flashit.exe".

"The system cannot find the file specified" error message may appear.

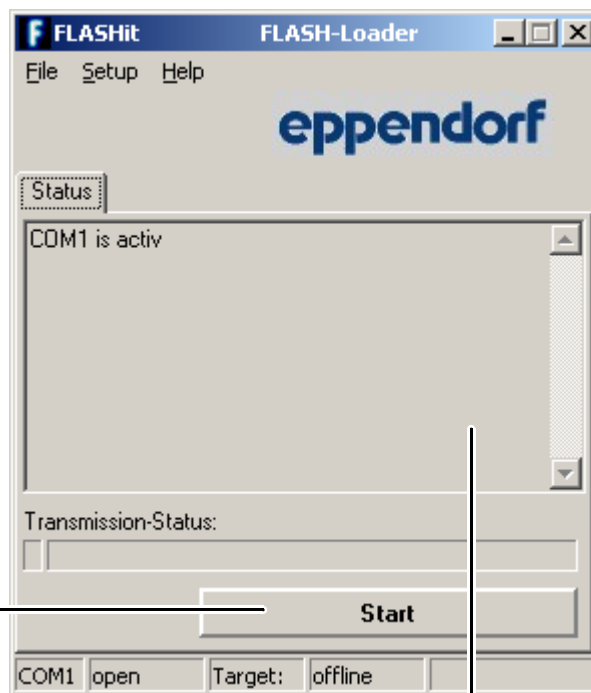
Cause: Not access to the "flashit.ini" file but to the "COM=1" row in this file. The error message appears if a different COM port has been assigned to the converter.

Remedy: Flashit->Setup->COM port, set COM3.

Upgrade procedure of the Control Panel 5340



Start "Flashit.exe"



Start programming

Wait until the Status is green.

Upgrade procedure of the Control Panel 5340

7. End of the Flash procedure

- ▶ Exit "Flashit.exe".
- ▶ Switch off Mastercycler.
- ▶ Take Jumper "Flash".
- ▶ PC with RS-232 port: Remove the RS-232 null modem cable.
- ▶ PC without RS-232 port: Remove the USB adapter.
- ▶ Mount the base plate of the panel.

8. Installation of the new Panel software

- ▶ Restart System.
- ▶ Insert the **MMC software** in the card reader of the control panel and press the "Enter" key.
- ▶ The control panel software upgrade will be automatically executed.
- ▶ The Cyclor software upgrade must then be completed via the navigation tree.
- ▶ Remove the **MMC software**.

9. Restoring of user files

- ▶ Insert the **Backup-MMC** and select the MMC node in the navigation tree.
- ▶ Press the Restore softkey and confirm the following dialog with Yes.
The user files are restored on the Control Panel.
This process may take a few minutes.
The Control Panel is restarted automatically after copying the user files.
- ▶ When the message Error: Flash and C:/dws_ram.bin do not match! [...] Insert MMC and press "Enter" Key is displayed remove the **Backup-MMC** and insert the **Software-MMC**.
- ▶ Press the Enter key
System files are copied and the Control Panel is restarted.
- ▶ When the User Login dialog or the navigation tree are displayed, remove the **Software-MMC**.
User files are now transferred.

eppendorf

Your local distributor: www.eppendorf.com/worldwide

Eppendorf AG · 22331 Hamburg · Germany · Tel: +49 40 53801-0 · Fax: +49 40 538 01-556 · E-mail: eppendorf@eppendorf.com
Eppendorf North America, Inc. · 102 Motor Parkway · Hauppauge, N.Y. 11788-5178 · USA
Tel: +1 516 334 7500 · Toll free phone: +1 800-645-3050 · Fax: +1 516 334 7506 · E-mail: info@eppendorf.com

Application Support Europe: Tel: +49 1803 666 789 (Preis je nach Tarif im Ausland; 9 ct/min aus dem dt. Festnetz; Mobilfunkhöchstpreis 42 ct/min)
support@eppendorf.com

North America: Tel: +1 800 645 3050 · E-mail: techserv@eppendorf.com
Asia Pacific: Tel: +60 3 8023 6869 · E-mail: support_asiapacific@eppendorf.com