

Product note

Mastercycler® nexus X2e, GX2e

English (EN)

Important installation note

The Eco devices Mastercycler nexus GX2e and Mastercycler nexus X2e may only be connected to a master device with software version 3.0.1.0 or higher.

This document complements the operating manual for the Mastercycler nexus and does not replace it. Before connecting the devices, read the operating manual of the Mastercycler nexus. The current version can be found on the Internet under www.eppendorf.com.

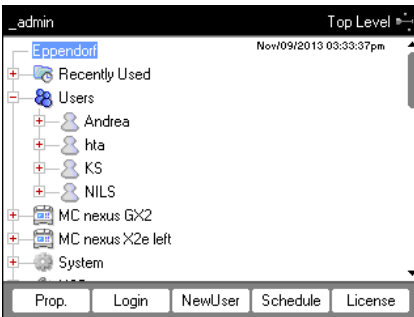
Checking the software version of the master device



NOTICE! Damage to device due to incompatible software version of the master device.

During synchronization with the Mastercycler nexus X2e or Mastercycler nexus GX2e, master devices with an older software version perform a downgrade of the Eco device. This makes the connected Eco device inoperable.

- ▶ Before connecting the devices: Check the software version of the master device.
- ▶ Master devices with a software version older than 3.0.1.0 must be upgraded by a service technician.



1. Mark the *Eppendorf* node.
2. Press the *Prop.* softkey.

An information window with the software version of the master device is displayed.

Software-Version ≤ 3.0.1.0: Software upgrade required. Eco device must not be connected.

Software-Version ≥ 3.0.1.0: Connect Eco device.



A software upgrade can only be carried out by a service technician. If a software upgrade is required, please contact your local Eppendorf Service (www.eppendorf.com).

Your local distributor: www.eppendorf.com/contact

Eppendorf AG · 22331 Hamburg · Germany

eppendorf@eppendorf.com · www.eppendorf.com