

Download, extracting and installation of service software „MC nexus Master_Slave_Settings PCB Mainboard“.

The purpose of this software is to change the PCB Mainboard default setting from Master version to Slave version. The Slave version is required for MC nexus eco.

Requirements:

Open Laptop and USB CAN Bus adapter (Order no.: See Service manual nexus).

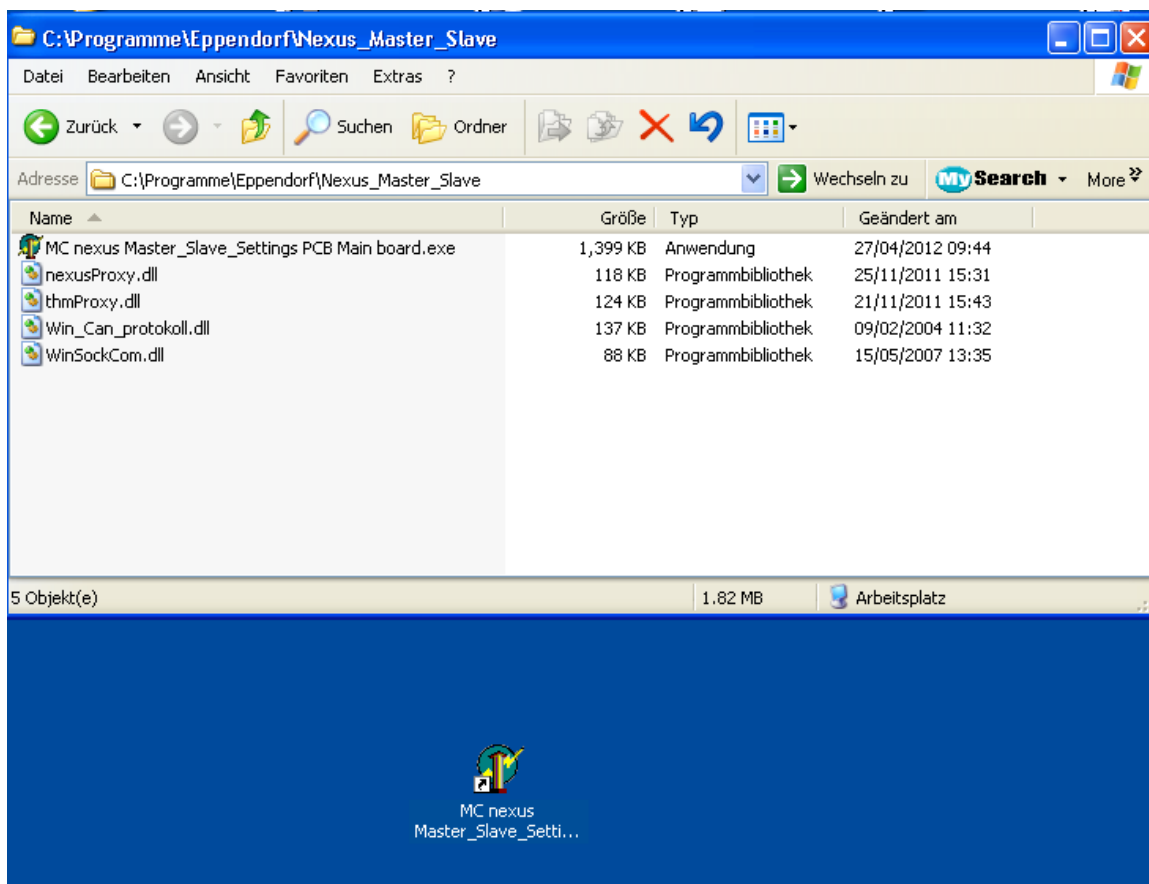
Download and extracting the software to your Laptop.

Plug in to the USB port of your Laptop the USB CAN Bus adapter.

Double click the “Nexus_Master_Slave.exe.

Follow the “Nexus_Master_Slave_Setup-InstallAware Wizard.

Default settings: Application and Peak USB Can Driver will be installed.



After the installation has been finished successful you can find under

C:\Programs\Eppendorf\Nexus_Master_Slave five files and on your desktop the

Icon “MC nexus Master_Slave_Setting” (see picture).

How to use this service software:

Double click the Icon “MC nexus Master_Slave_Setting” and follow further instructions on your Laptop.