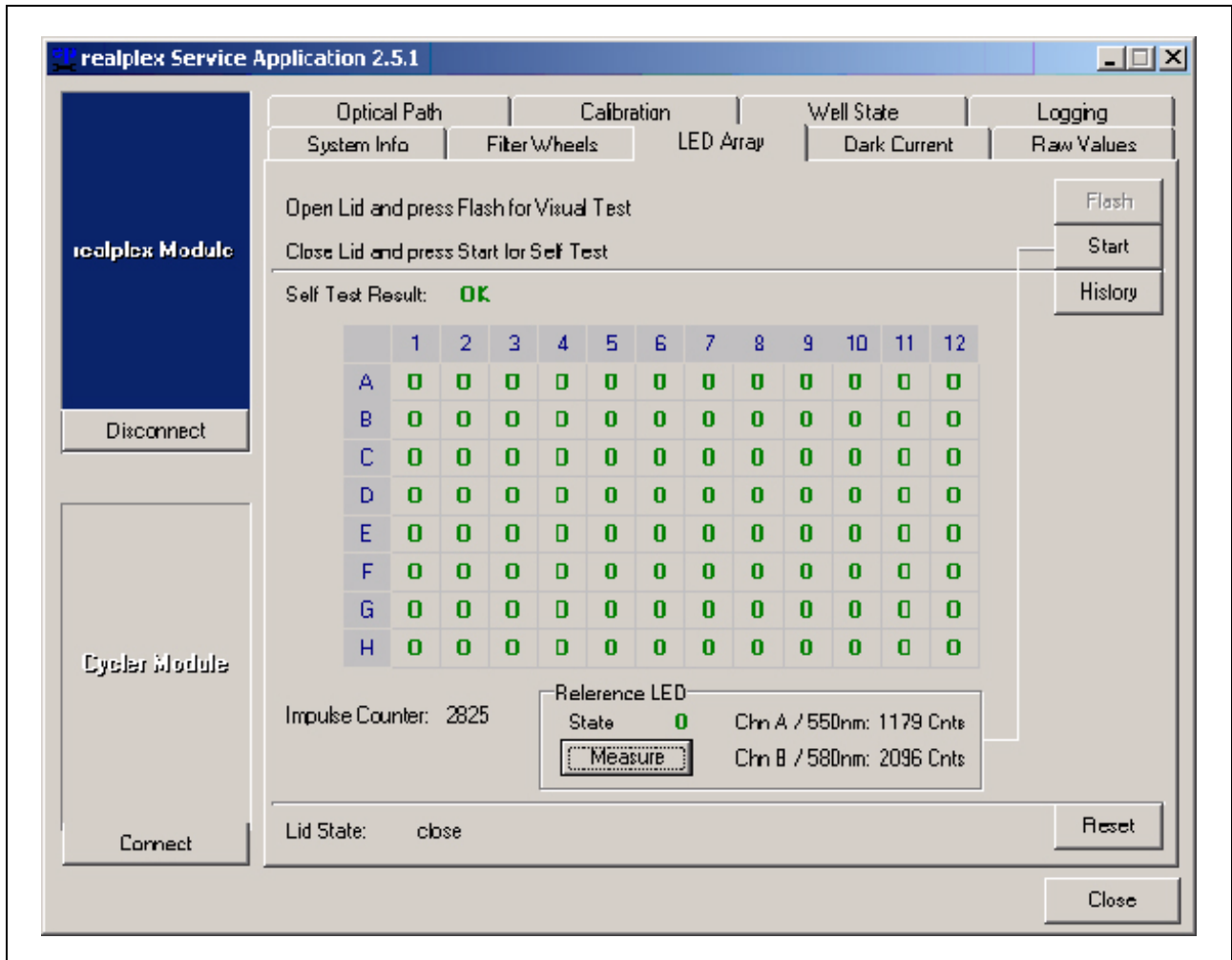


Additional service function of the realplex module as of firmware version 4.02

With realplex Service Application 2.5.1

LED-Array



The reference LED can be measured now.

The "Measure" button activates measurements with fixed voltage level.

Devices that are not adjusted will not show any value.

The ranges for these values are:

PerkinElmer devices: 500...3000 counts

Hamamatsu devices: 350...5000 counts

If the values are not in the range, the normal glass in the reference channel carrier must be replaced.

Additional service function of the realplex module as of firmware version 4.02

**Raw values**

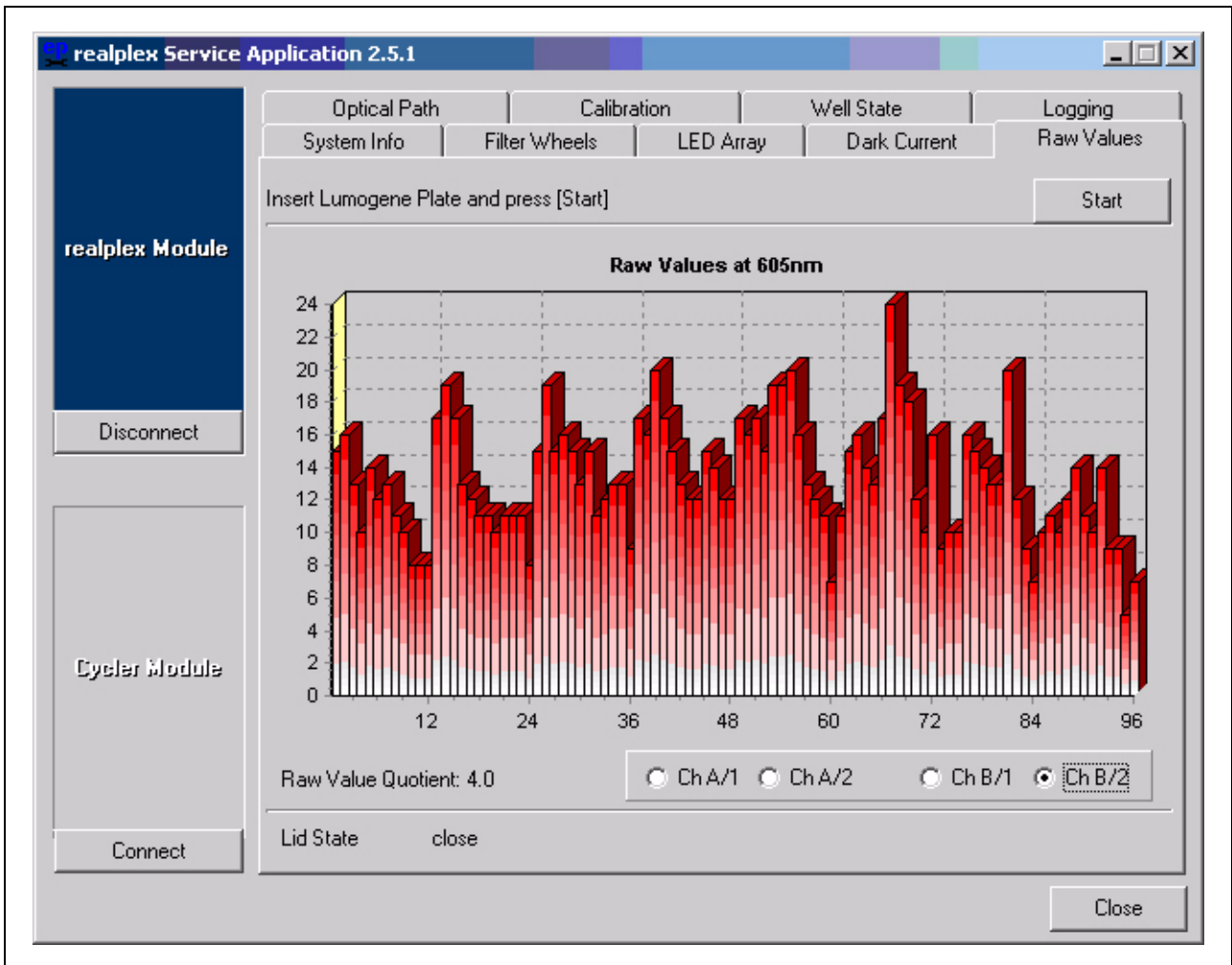
The "Start" button activates a measurement with all 96 channels and all wavelengths.

The values are dark current corrected raw values.

The raw values quotient will be calculated from highest single value, divided by lowest single value.

The quotient for the PE multiplier should not be higher than 3.7 and for HA multiplier it should not be higher than 5.7.

If the quotient is out of range the Light conductor package can be turned in 45° steps.



Raw values position 1 is the thermoblock position A1

.

12 = thermoblock position A12

13 = B1

.

96 = H12

## Additional service function of the realplex module as of firmware version 4.02

### Test of Multiplier, Light path (lens array) and Light conductors

The multiplier functionality can be tested with the Lumogen plate.

The intensity between the filters should be approximately:

Filter	Ch A / 1	Ch A / 2	Ch B / 1	Ch B / 2
Rel. intensity	3 - 5	1	1	1,5 - 2