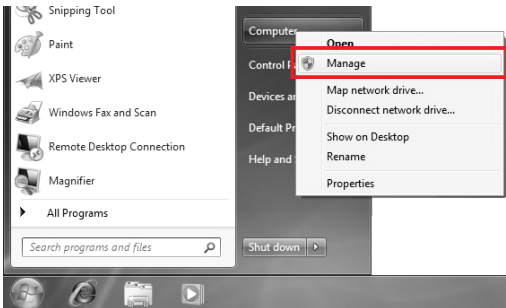


Installing the Mastercycler® ep realplex Software with Windows 7

The Mastercycler ep *realplex* software must be installed and run from the Administrator account in Windows. The following steps are required before installing and running the Mastercycler ep *realplex* software to enable this account and to prepare software installation in Windows 7.

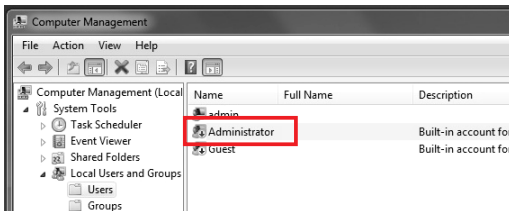
- i** The Mastercycler ep *realplex* software only supports 32-bit versions of Windows XP and Windows 7 Professional.

1. Boot up the computer and wait for the Windows 7 desktop to appear.
2. Open the start menu and right click on **Computer**.
3. In the context menu, select **Manage**.



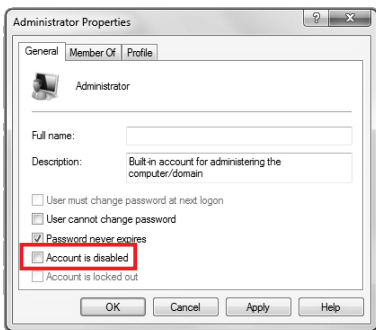
The window **Computer Management** opens.

4. Double click entry **Administrator** in **Local Users and Groups**.



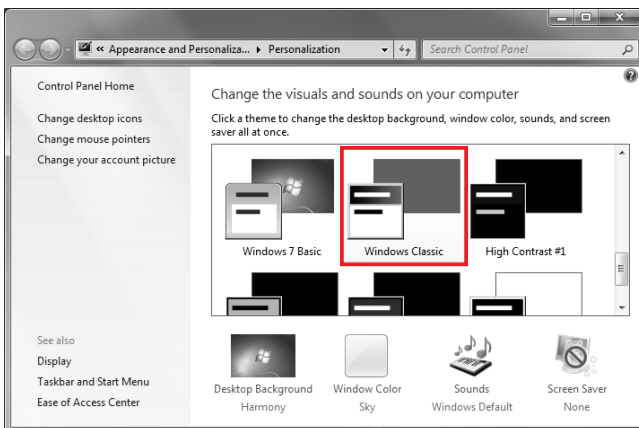
The window **Administrator Properties** opens.

5. Uncheck **Account is disabled** and confirm with **Ok**.



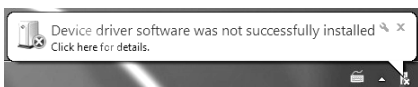
Installing the Mastercyclcr® ep realplex Software with Windows 7

6. Log off from Windows and log back on as **Administrator**.
7. Right click on the desktop and select **Personalize** in the context menu.
The **Personalization** control panel window opens.
8. Scroll down the theme selection control and under **Basic and High Contrast Themes** select **Windows Classic**.



Windows switches to the classic desktop appearance. This is necessary to avoid display problems with some dialog windows in the Mastercyclcr ep *realplex* software.

9. Close the personalization window.
10. Plug in the Peak USB CAN Adapter to any USB port.
Ignore the popup message **Device driver software was not successfully installed**.



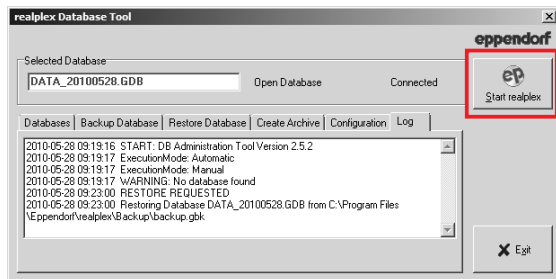
11. Install the Mastercyclcr ep *realplex* software from the installation CD-ROM (see booklet) accepting all default settings.

-
- i** Deny any requests to restart your computer during the installation of the Mastercyclcr ep *realplex* software. Instead, restart your computer after the installation is complete.
-

Starting the Mastercyler ep realplex software the first time

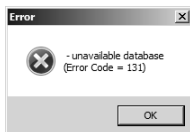
Requirement

When starting the Mastercyler ep *realplex* software the first time after installation, the database setup must be performed as described in section **Restore Database** in the booklet of the installation CD-ROM. After this process is finished, proceed as follows:



1. Click **Start realplex**.

The following message appears:



This message is only displayed during the initial start of the software.

2. Confirm with Ok
The Mastercyler ep *realplex* software closes.
3. To restart the software, double click the **realplex** icon on the desktop.



6302 900.394-0/0610

Your local distributor: www.eppendorf.com/worldwide

Eppendorf AG · 22331 Hamburg · Germany · Tel: +49 40 538 01-0 · Fax: +49 40 538 01-556
E-Mail: eppendorf@eppendorf.com

Eppendorf North America, Inc. · 102 Motor Parkway, Suite 410 · Hauppauge, NY 11788-5178 · USA
Tel: +1 516 334 7500 · Toll free phone: +1 800 645 3050 · Fax: +1 516 334 7506 · E-Mail: info@eppendorf.com

Application Support

Europe, International: Tel: +49 1803 666 789 · E-Mail: support@eppendorf.com
North America: Tel: +1 800 645 3050, menu option 2 · E-Mail: support_na@eppendorf.com
Asia Pacific: Tel: +60 3 8023 6869 · E-Mail: support_asiapacific@eppendorf.com