

Contact person in HQ, Hamburg:	Uwe Krohss
Telefon:	+49 40-5 38 01-193
Email:	krohss.u@eppendorf.de

## Mastercycler ep S with new block

Please note, that this instruction is only applicable if the thermoblock of the Mastercycler ep S is replaced by a latest generation thermoblock 6321 859.001. All other models of the Mastercycler ep and Mastercycler pro series are not affected.

The Mastercycler ep S with the latest generation thermoblock requires the following software versions:

Control Panel	Firmware Version	CP Software Version
CP 5340	3.024 and higher	4.603 and higher
CP 6320	3.024 and higher	1.009 and higher

A downgrade of the software is not supported at any time.

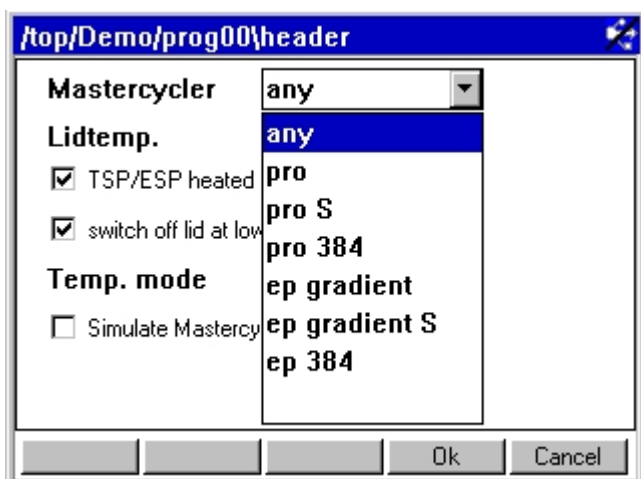
If the MC ep S with new block is connected to the ep CycleManager software it is necessary to update to the CycleManager pro software.

In case, that the impulse function is used for PCR programs the user must take into consideration, that PCR programs need to be modified.

Until a software change which simplifies the programming of the impulse function, proceed according to the following examples.

### 1. Operation without impulse function

A PCR program of this kind can be used for every Mastercycler ep and Mastercycler pro. Select "any" in the "Program Header" settings of the thermoblock types.



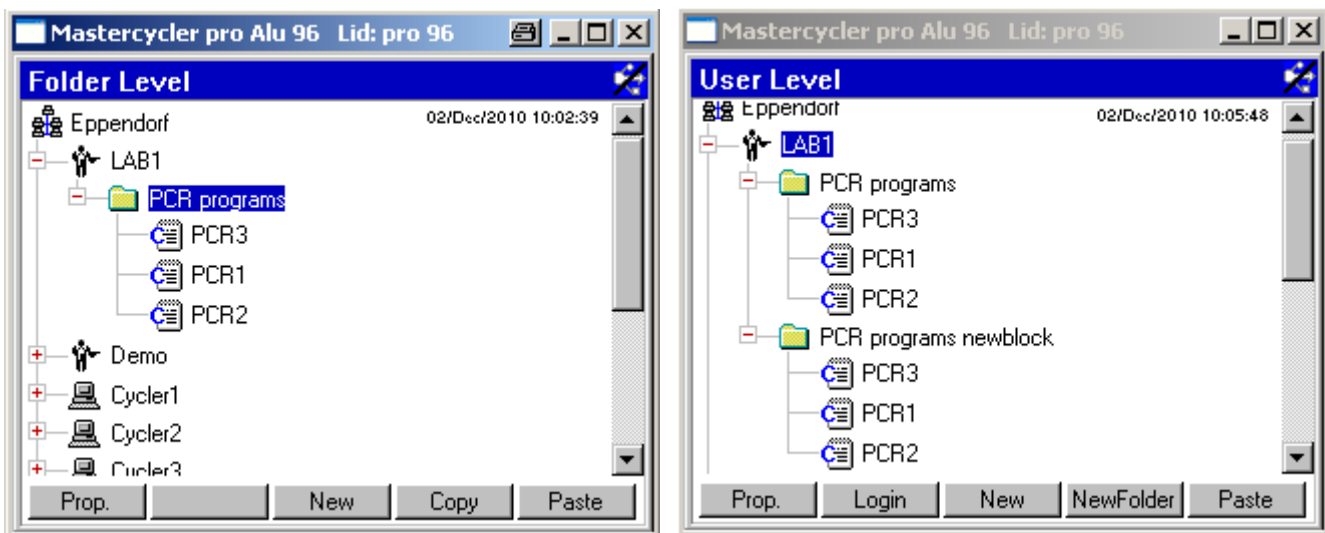
Contact person in HQ, Hamburg:	Uwe Krohss
Telefon:	+49 40-5 38 01-193
Email:	krohss.u@eppendorf.de

## 2. Operation with impulse function on a standalone device

Select “pro S” in the “Program Header” settings of the thermoblock types.

## 3. Operation with impulse function in Mini Satellite System with MC ep S with and without new block

To run PCR programs with impulse function on MC ep S with and without new block connected to one control panel it is necessary to use two programs with different header settings. To do so, copy all programs with impulse function and create a new folder for programs which are suitable for the Mastercycler ep S with new block.



Select “pro S” in the “Program Header” of the PCR programs for Mastercycler ep S with new block. The original PCR programs will keep the setting “ep gradient S” and can be used on the Mastercycler ep S with the original block.

## 4. Operation with impulse function in the CycleManager software with MC ep S with and without new block

To run PCR programs with impulse function on MC ep S with and without new block which are controlled by the CycleManager pro software it is necessary to create two programs with different header settings. To do so, copy all programs with impulse function and create a new folder for programs which are suitable for the Mastercycler ep S with new block.

Select “pro S” in the “Program Header” of the PCR programs for Mastercycler ep S with new block. The original PCR programs will keep the setting “ep gradient S” and can be used on the Mastercycler ep S with the original block.