

## Mounting instruction for the new PCB-Display for Mastercycler 5331, 5333 and 5334

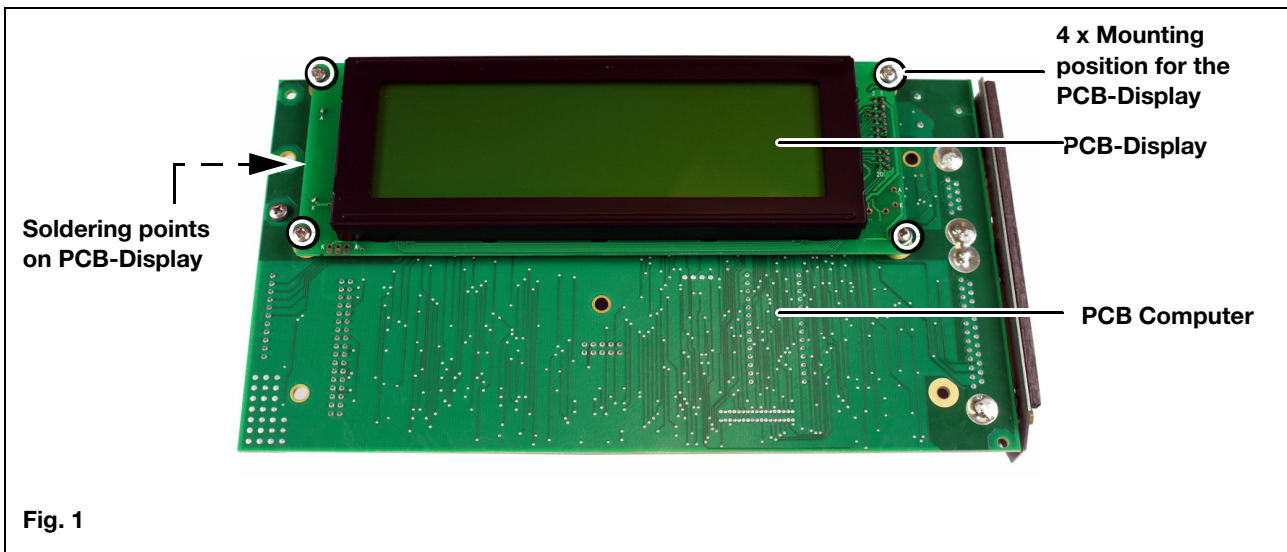
The PCB-Display with order no. 5331 860.001 is not longer available.

New order no. is 5331 873.006.

### Shipment

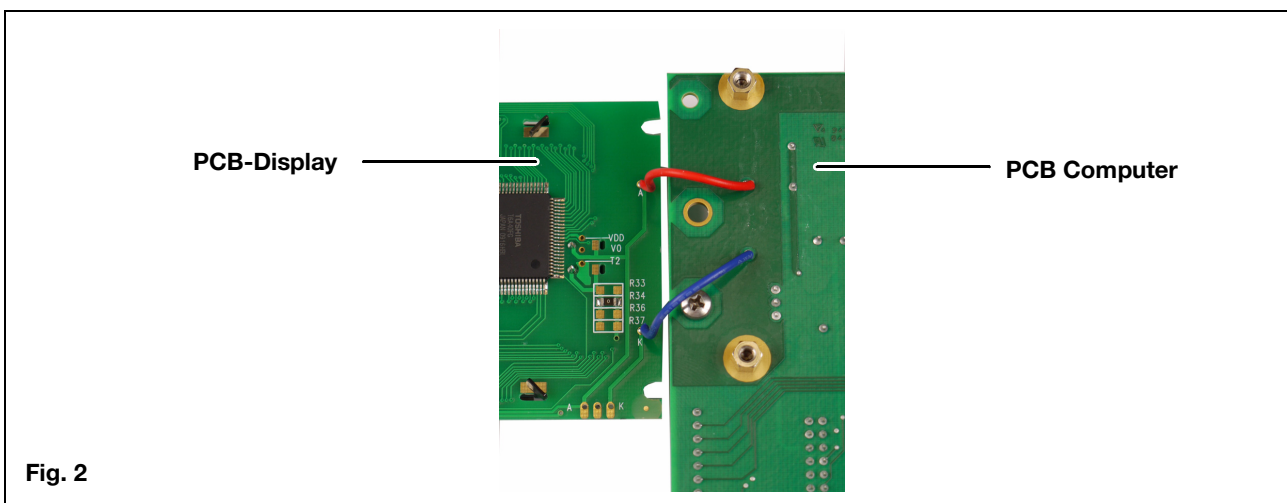
The shipment consist of following components:

- PCB-Display
- 1 Mounting set
- Mounting instruction



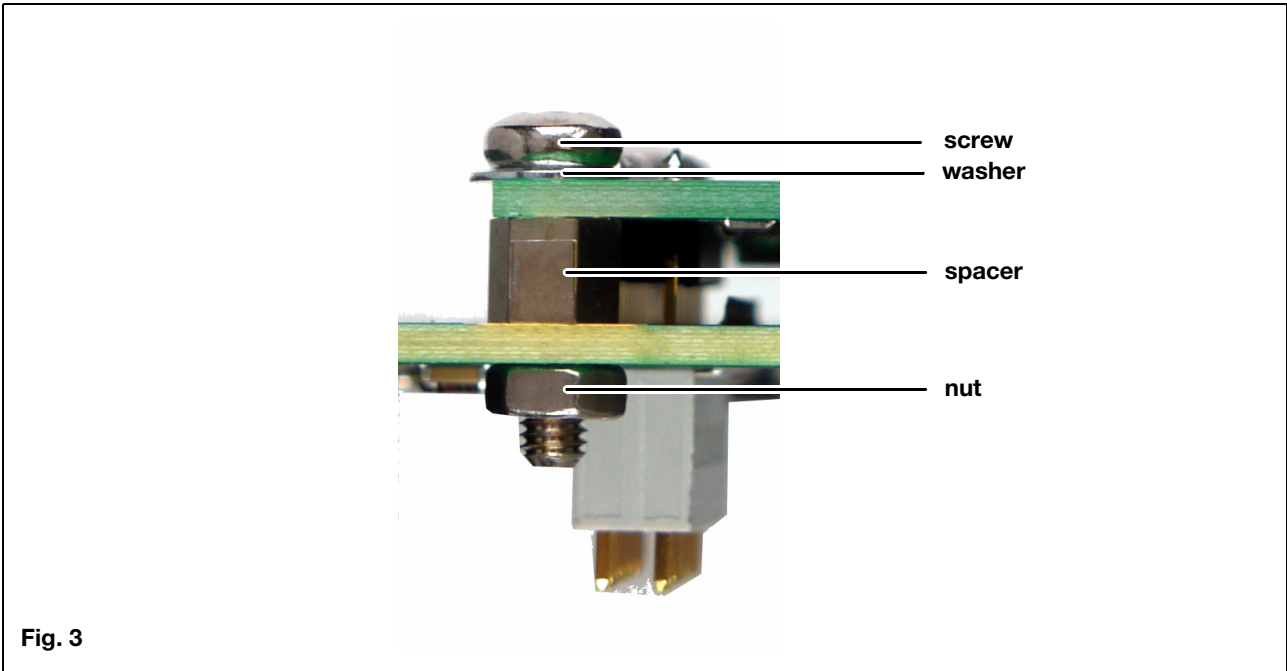
### Mounting of the new PCB-Display

- Take old PCB-Display from PCB Computer and remove spacers also.
- Solder red and black wire from PCB-Display to PCB-Computer. See Picture 2.

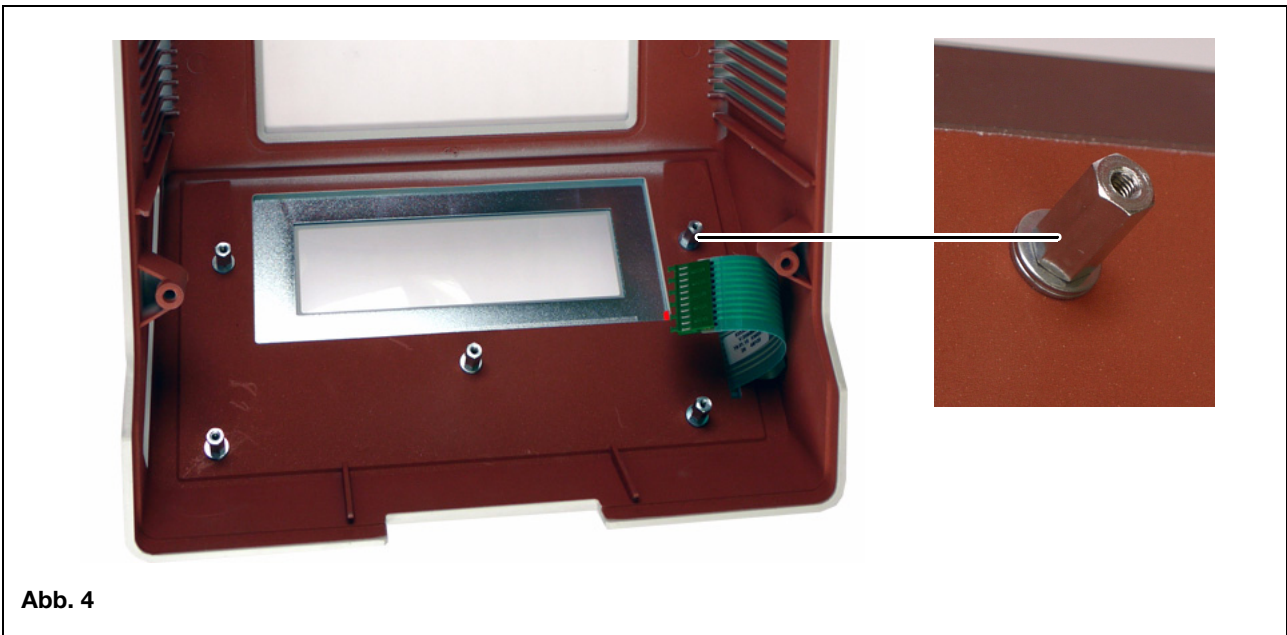


**eppendorf**  
*In touch with life*

Mounting instruction for the new PCB-Display for Mastercycler 5331, 5333 and 5334



- Use mountings set and mount new PCB-Display to PCB-Computer.



- Always put two washers between the spacers and the housing.